

Maximum 455 kW (610 hp) @2500 RPM (PLEASURE CRAFT)

STANDARD EQUIPMENT

MG-5075SC

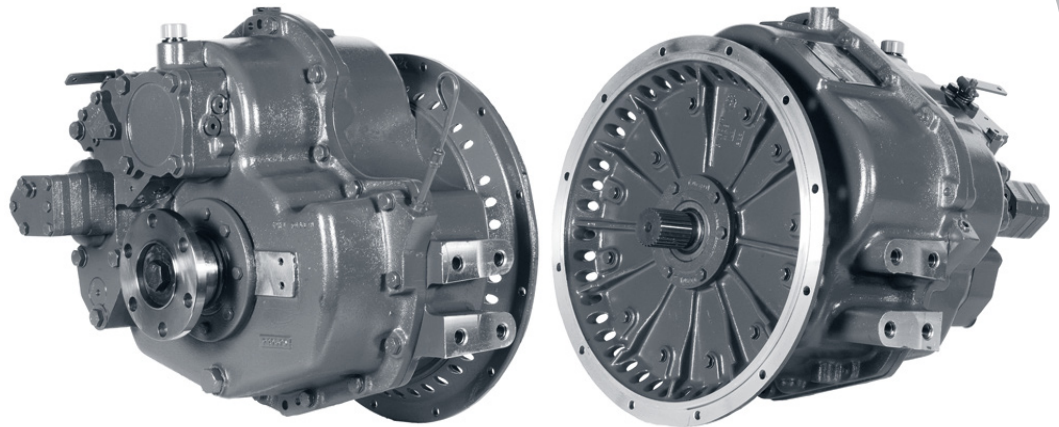
Near coaxial, aluminum housing
 Mechanical control valve
 Oil strainer

MG-5075A

Near coaxial, aluminum housing
 7° down angle on output shaft
 Mechanical control valve
 Oil strainer

MG-5075IV

Integral V-drive, aluminum housing
 15° down angle on output shaft
 Mechanical control valve
 Oil strainer



INPUT RATINGS - KILOWATS (KW) (HORSEPOWER (HP))*

For service classification definitions and important notes refer to www.twindisc.com, the Twin Disc Marine Product Guide or contact Twin Disc directly.

MG-5075SC	Reduction Ratios :1	Pleasure Craft @ 2500 RPM	Light Duty @ 2300 RPM	Intermediate Duty @ 2100 RPM	Medium Duty @ 1800 RPM	Continuous Duty @ 1800 RPM
	0.80, 0.92 1.00, 1.16	410 kW (550 hp)	355 kW (476 hp)	268 kW (360 hp)	205 kW (275 hp)	186 kW (249 hp)
	1.06, 1.33, 1.53 1.77, 2.05	455 kW (610 hp)	368 kW (493 hp)	283 kW (380 hp)		
	2.53	410 kW (550 hp)	355 kW (476 hp)	268 kW (360 hp)		
2.88	403 kW (540 hp)	348 kW (467 hp)	261 kW (350 hp)			

MG-5075A	Reduction Ratios :1	Pleasure Craft @ 2500 RPM	Light Duty @ 2300 RPM	Intermediate Duty @ 2100 RPM	Medium Duty @ 1800 RPM	Continuous Duty @ 1800 RPM
	1.06, 1.33, 1.53 1.77, 2.05	455 kW (610 hp)	368 kW (493 hp)	283 kW (380 hp)	205 kW (275 hp)	186 kW (249 hp)
	2.53	410 kW (550 hp)	355 kW (476 hp)	268 kW (360 hp)		
2.88	403 kW (540 hp)	348 kW (467 hp)	261 kW (350 hp)			

MG-5075A	Reduction Ratios :1	Pleasure Craft @ 2500 RPM	Light Duty @ 2300 RPM	Intermediate Duty @ 2100 RPM	Medium Duty @ 1800 RPM	Continuous Duty @ 1800 RPM
	1.03, 1.30, 1.49 1.72, 1.99, 2.46	423 kW (567 hp)	355 kW (476 hp)	268 kW (360 hp)	205 kW (275 hp)	186 kW (249 hp)

* Ratings shown for use with standard right-hand rotation engines.
 The maximum allowable rated engine speed is 3500 rpm (3000 rpm for ratios 0.80:1, 0.92:1, 1.00:1 and 1.16:1).



Specifications subject to change without prior notice in the interest of continual product improvement.
 Contact your local Twin Disc representative for engineering specifications, Survey Society Approvals and Classifications.

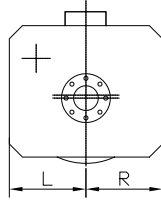
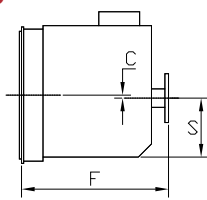
Scan QR code to see Twin Disc's entire Marine product line.



OPTIONS

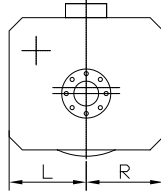
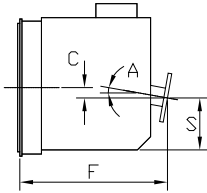
	MG-5075SC	MG-5075A	MG-5075IV
SAE J617 housing no. 1	X	X	X
SAE J617 housing no. 2	X	X	X
SAE J617 housing no. 3	X	X	X
Flexible coupling for 14" flywheel (SAE J620 size 355)	X	X	X
Flexible coupling for 11½" flywheel (SAE J620 size 290)	X	X	X
Input flange for freestanding installation			X
Electric control valve (12VDC or 24 VDC)	X	X	X
Mechanical trolling valve	X	X	X
Oil cooler with thermostatic bypass valve	X	X	X
Companion flange/ bolts set	X	X	X
Monitoring devices to customer's specification	X	X	X
Mounting brackets	X	X	X
Live PTO:			
SAE J744 size 82-2, 16-4 (SAE "A", 2-bolt) - max. 58 Nm	X	X	X
SAE J744 size 101-2/4, 22-4 (SAE "B", 2/4-bolt)			
- max. 197 Nm	X	X	X
SAE J744 size 101-2/4, 25-4 (SAE "B-B", 2/4-bolt)			
- max. 337 Nm	X	X	X
Dry weight incl. SAE #2 housing and SAE 290 flexible coupling	123 kg	122 kg	150 kg

MG-5075SC



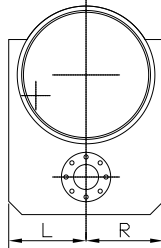
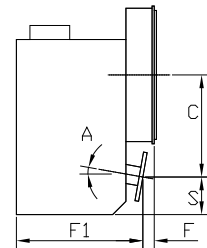
C	15 mm (0.59")
S	178 mm (7.00")
F	373 mm (14.68")
L	254 mm (10.00")
R	254 mm (10.00")

MG-5075A



C	48 mm (1.91")
S	178 mm (7.00")
F	358 mm (14.11")
L	254 mm (10.00")
R	254 mm (10.00")
A	7°

MG-5075IV



C	373 mm (14.68")
S	100 mm (3.93")
F	71 mm (2.81")
F1	354 mm (13.94")
L	254 mm (10.00")
R	254 mm (10.00")
A	15°

Twin Disc, Incorporated reminds users of these products that their safe operation depends on use in compliance with engineering information provided in our catalog. Users are also reminded that safe operation depends on proper installation, operation and routine maintenance and inspection under prevailing conditions. It is the responsibility of users (and not Twin Disc, Incorporated) to provide and install guards or safety devices which may be required by recognized safety standards or by the Occupational Safety and Health Act of 1970 and its subsequent provisions.

United States of America • Australia • Belgium • Canada • China • India • Italy • Singapore • Switzerland

For nearly a century, we've been making boats perform better and more reliably. From system-design consultation to application development to in-service support, Twin Disc provides fully integrated propulsion solutions that will optimize your craft's performance, reliability and safety over the years. Bring Twin Disc aboard early in the development process, and you'll enjoy a lifetime of enhanced operating value.

TRANSMISSIONS • ELECTRONIC CONTROLS • EXPRESS JOYSTICK SYSTEM® • SAILDRIVES • EXPRESS POSITIONING® • ARNESON SURFACE DRIVES • MARINE CONTROL DRIVES • ROLLA PROPELLERS • BOW & STERN THRUSTERS • STEERING SYSTEMS • RUDDERS • TRIM TABS



Twin Disc, Incorporated
Racine, Wisconsin 53403 USA
Phone +1-262-638-4000
Fax +1-262-638-4482
www.twindisc.com

TD-Bulletin-MG-5075_Series
© 2016, Twin Disc, Incorporated
Printed in the USA - 1/2016