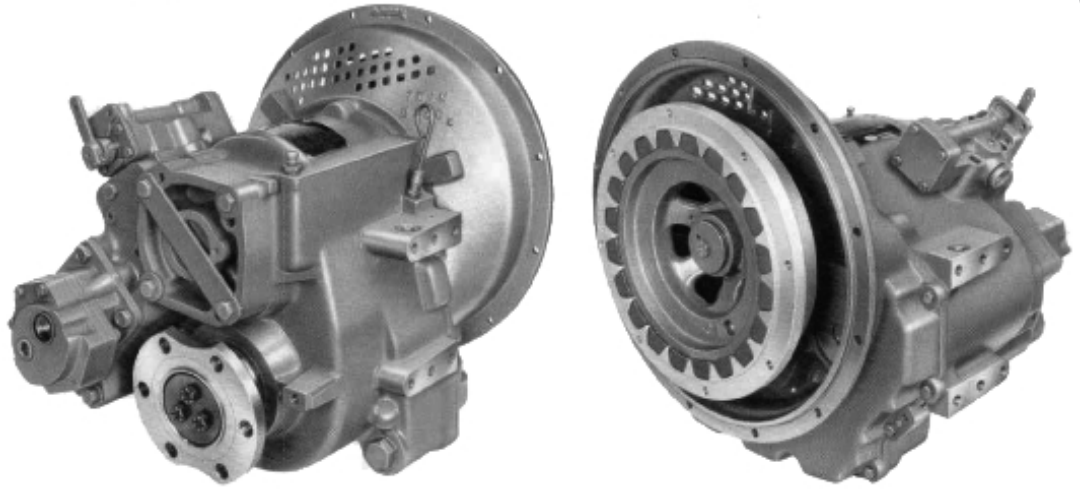


Maximum 530 kW (710 hp) @2300 RPM (PLEASURE CRAFT)

STANDARD EQUIPMENT

MG-5090A

- Vertical offset, cast iron housing
- 7° down angle on output shaft
- Mechanical control valve
- Oil strainer



INPUT RATINGS - KILOWATS (KW) (HORSEPOWER (HP))*

For service classification definitions and important notes refer to www.twindisc.com, the Twin Disc Marine Product Guide or contact Twin Disc directly.

Reduction Ratios :1	Pleasure Craft @ 2300 RPM	Light Duty @ 2300 RPM	Intermediate Duty @ 2100 RPM	Medium Duty @ 1800 RPM	Continuous Duty @ 1800 RPM
1.45, 1.73, 1.96	530 kW (710 hp)	471 kW (632 hp)	343 kW (460 hp)	267 kW (358 hp)	239 kW (320 hp)
2.43	474 kW (635 hp)	442 kW (593 hp)	306 kW (410 hp)	250 kW (335 hp)	

* Ratings shown for use with standard right-hand rotation engines.
The maximum allowable rated engine speed is 3000 rpm.



Specifications subject to change without prior notice in the interest of continual product improvement.
Contact your local Twin Disc representative for engineering specifications, Survey Society Approvals and Classifications.

Scan QR code to see Twin Disc's entire Marine product line.



OPTIONS

SAE J617 housing no. 1

Flexible coupling for 14" flywheel (SAE J620 size 355)

Electric control valve (12VDC or 24 VDC)

Mechanical trolling valve

Oil cooler with thermostatic bypass valve

Companion flange/ bolts set

Monitoring devices to customer's specification

Mounting brackets

Live PTO – max. 593 Nm

SAE J744 size 127-4, 32-4 (SAE "C", 4-bolt)

Hydraulic clutchable PTO – max. 415 Nm

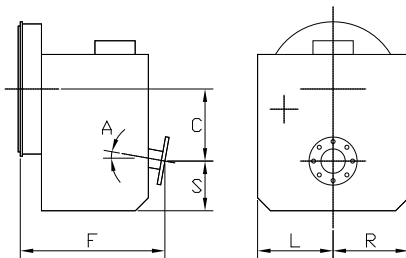
SAE J744 size 127-4, 32-4 (SAE "C", 4-bolt)

Dry weight incl. SAE #1 housing and SAE 355 flexible coupling: **215 kg**

For nearly a century, we've been making boats perform better and more reliably. From system-design consultation to application development to in-service support, Twin Disc provides fully integrated propulsion solutions that will optimize your craft's performance, reliability and safety over the years. Bring Twin Disc aboard early in the development process, and you'll enjoy a lifetime of enhanced operating value.

TRANSMISSIONS • ELECTRONIC CONTROLS • EXPRESS JOYSTICK SYSTEM® • SAILDRIVES • EXPRESS POSITIONING® • ARNISON SURFACE DRIVES • MARINE CONTROL DRIVES • ROLLA PROPELLERS • BOW & STERN THRUSTERS • STEERING SYSTEMS • RUDDERS • TRIM TABS

MG-5090A



C	185 mm (7.30")
S	128 mm (5.05")
F	434 mm (17.07")
L	260 mm (10.25")
R	178 mm (7.00")
A	7°

Twin Disc, Incorporated reminds users of these products that their safe operation depends on use in compliance with engineering information provided in our catalog. Users are also reminded that safe operation depends on proper installation, operation and routine maintenance and inspection under prevailing conditions. It is the responsibility of users (and not Twin Disc, Incorporated) to provide and install guards or safety devices which may be required by recognized safety standards or by the Occupational Safety and Health Act of 1970 and its subsequent provisions.

United States of America • Australia • Belgium • Canada • China • India • Italy • Singapore • Switzerland



Twin Disc, Incorporated
Racine, Wisconsin 53403 USA
Phone +1-262-638-4000
Fax +1-262-638-4482
www.twindisc.com

TD-Bulletin-MG-5090A
© 2016, Twin Disc, Incorporated
Printed in the USA - 1/2016